

DRAWING ALTERATION

The following is an excerpt from the New York State Education Law Article 147 Section 7207 Part 69.5b and applies to this drawing.

"It is a violation of the law for any person, unless acting under the direction of a licensed architect, to alter an item in any way. If an item bearing the seal of an architect is altered, the altering architect shall affix to his item the seal and the notation 'altered by' followed by his signature and the date of such alteration, and a specific description of the alteration."

REVISIONS

PROGRESS PLOT 4/8/24

ISSUED FOR FINAL BIDDING

ISSUED FOR PERMIT

ISSUED FOR CONST.

NO. DATE DESCRIPTION

4/8/24 NREDI Renovation

PROJECT

VISION NISSAN

LOCATION

785 Ridge Rd
Webster
Monroe County
New York

DRAWING TITLE

Proposed Elevations

SHEET NO. SCALE: As noted

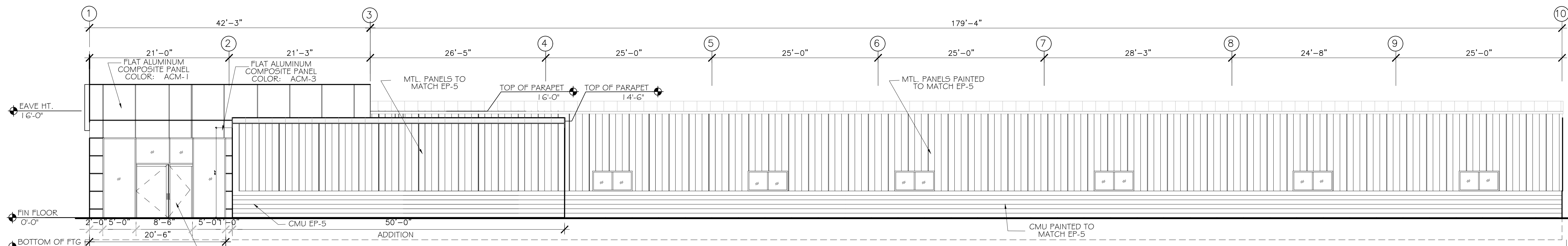
DRAWN BY: ADR

CHECKED BY:

DATE: July 2023

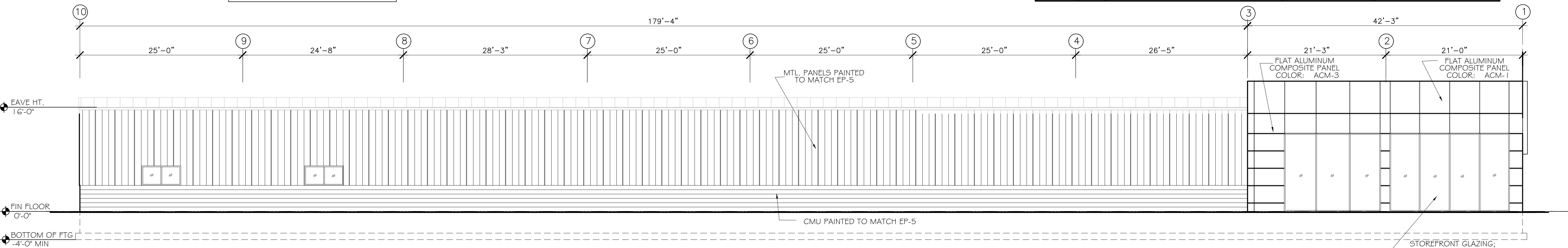
DRAWING:

A-3b



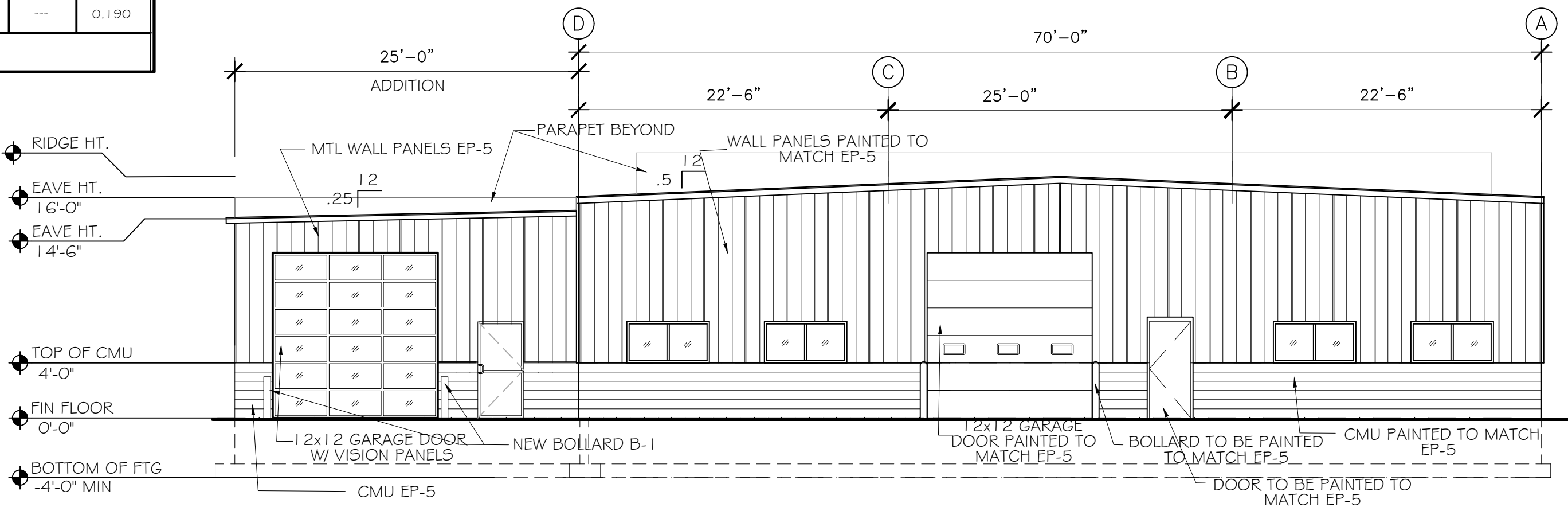
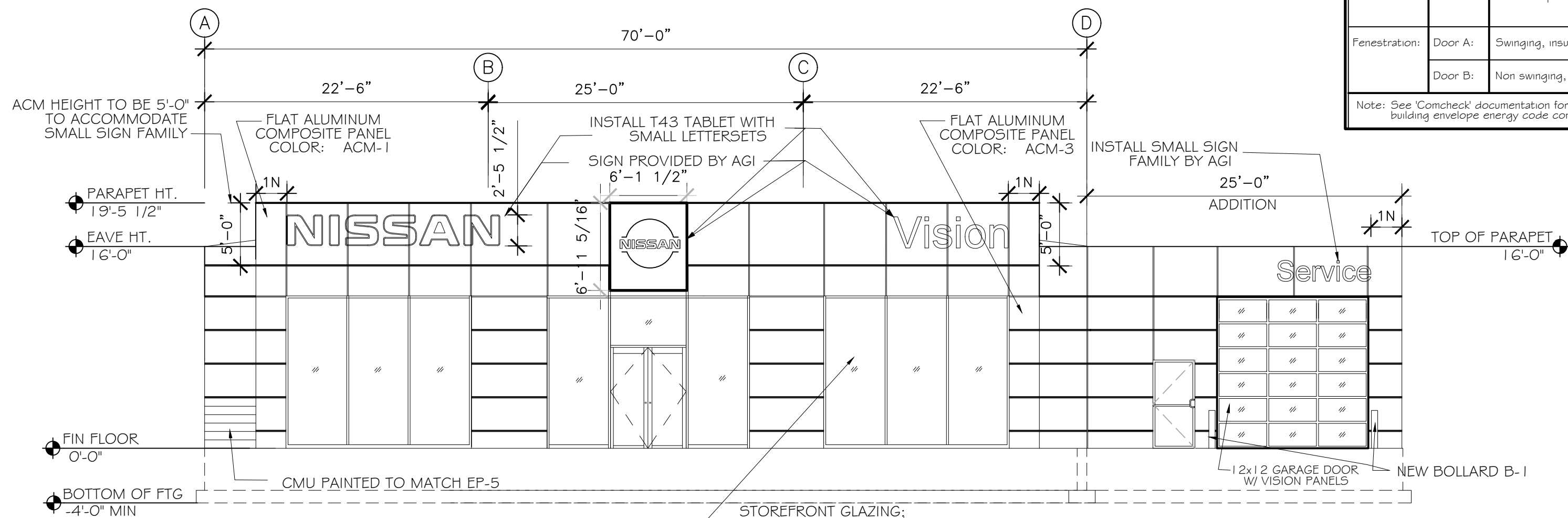
MATERIAL SCHEDULE				
AREA	CODE	ITEM	PRODUCT	COLOR
EXTERIOR	ACM-1	ALUMINUM COMPOSITE MATERIAL - SILVER	ALPOLIC	BSX SILVER METALLIC
	ACM-3	ALUMINUM COMPOSITE MATERIAL - DARK GRAY	ALPOLIC 732L878 (FEVE)	NSG NISSAN GRAY
	EP-5	PAINT - DARK GREY		TO MATCH SHERWIN WILLIAMS 7076 CYBERSPACE OR RAL 7024 GRAPHITE GRAY
	B-1	BOLLARD	PRE FINISHED BOLLARD	STAINLESS STEEL

OR: LIGHT GREY PAINT OR VINYL SLIP ON



BUILDING ENVELOPE THERMAL COMPLIANCE			
COMPONENT	DESCRIPTION	R VALUE	ASSEMBLY U VALUE
Roof 1:	Standing seam metal roof with R30 insulation (warehouse)	---	0.043
Floor:	Concrete slab on grade; R10 rigid vertical perimeter insulation	10.0	
Walls:	Wall 1: 8" 0mm block' cmu with integral insulation inserts	---	0.048
	Wall 2: T-Shadowwall' metal wall panel with R-25 batt insulation	---	0.045
	Wall 3: ACM wall panel with R-25 batt insulation	---	?
Penetration:	Door A: Swinging, insulated metal	---	0.55
	Door B: Non swinging, insulated metal; (sizes vary)	---	0.190

Note: See 'Comcheck' documentation for complete building envelope energy code compliance





To: Planning Board

Re: Vision Nissan(s)

Please be advised, that BME Associates on behalf of the Owner, is authorized to present plans and other related materials for our Vision Nissan image renovations to the Planning Board for its review and subsequent approval.

Regards,

A handwritten signature in blue ink, appearing to read "JD", with a long horizontal stroke extending to the right.

John DaGrosa, Agent