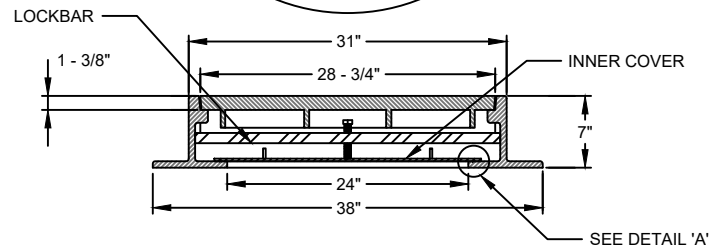
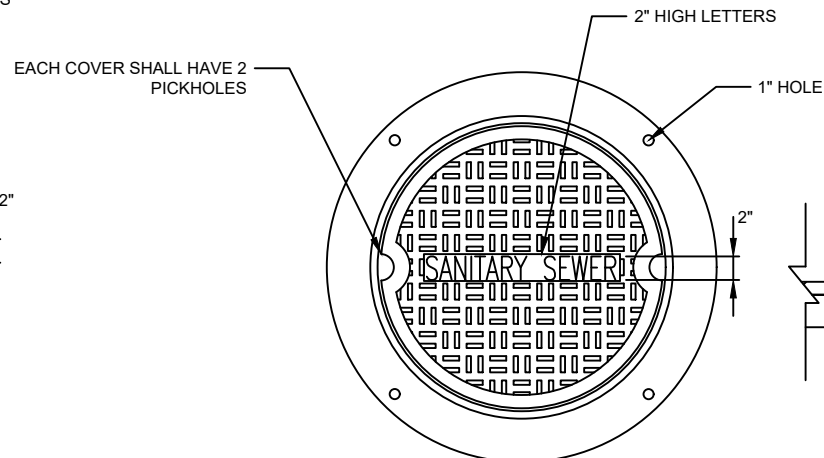
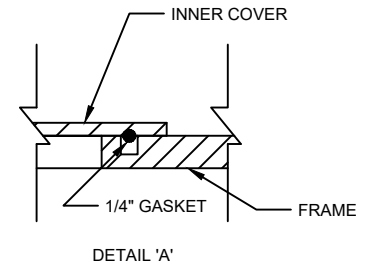


STANDARD

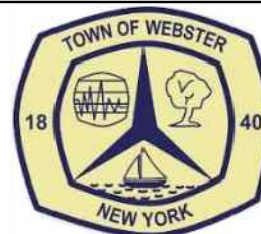


WATERTIGHT
FRAME & COVER



NOTES:

1. MATERIAL SHALL BE GRAY CAST IRON CONFORMING TO ASTM A48 (LATEST REVISION) CLASS 308.
2. HEAVY DUTY CASTING SHALL BE DESIGNED FOR AASHTO H20-16 WHEEL LOADS.
3. THE STANDARD CASTING SHALL BE MODEL NO. 1032 & WATERTIGHT CASTING MODEL NO. 6545 AS MANUFACTURED BY SYRACUSE CASTING SALES CORP. OR APPROVED EQUAL.
4. DETAIL ONLY APPLIES TO GRAVITY MAIN MANHOLES. DISCHARGE MANHOLES FOR FORCEMAINS SHALL BE SUBJECT TO SEWER DEPARTMENT REVIEW AND APPROVAL.



SANITARY MANHOLE FRAME AND COVER

SCALE: N.T.S.

FEBRUARY 2023

SA-013